

RENDERING COMING SOON

# THE CARTWRIGHT



HOUSE SIZE  
3,835 SF



BEDROOMS  
4



BATHROOMS  
3.75



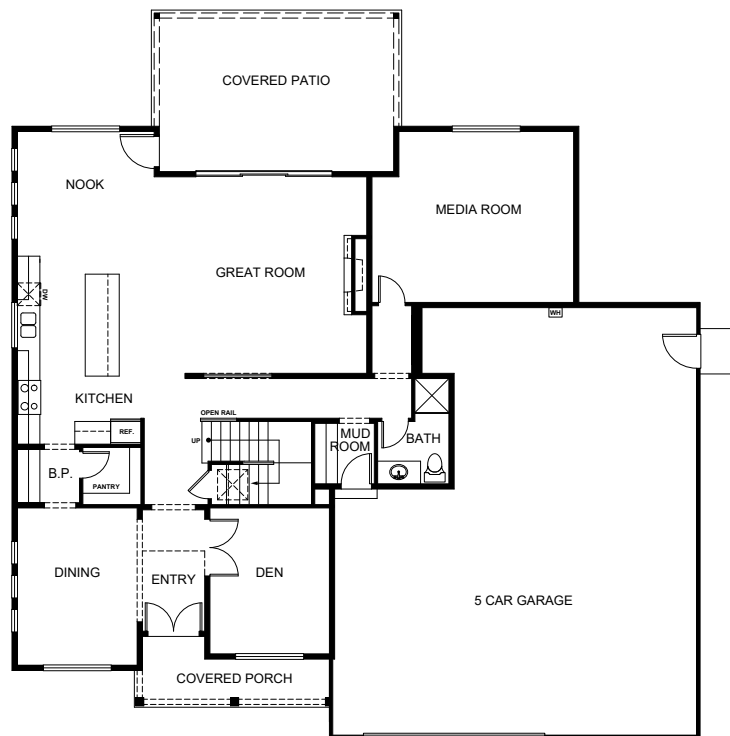
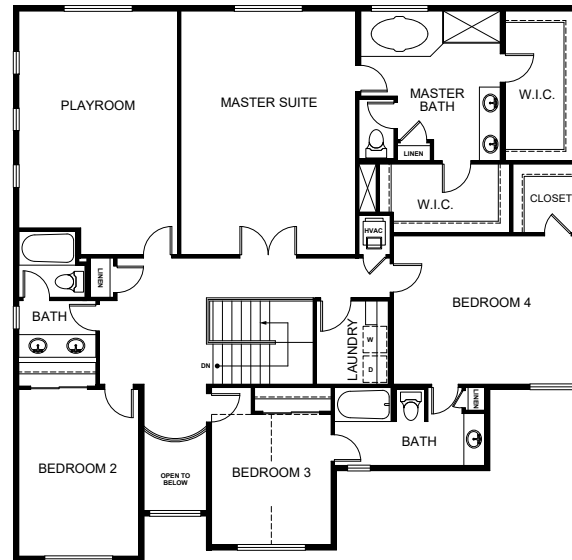
GARAGES  
5



STORIES  
2

## FLOORPLAN FEATURES

- Five-Piece Master Bath with Soaking Tub
- Master Bedroom with Two Walk-in Closets
- French Doors in Master Bedroom & Den
- Spacious Covered Patio for Outdoor Living
- Butler's Pantry Between Kitchen and Formal Dining Room
- Two Bonus Rooms



Check with Sales Agent for specific details on this home. Rendering is for conceptual purposes, actual home exterior and interior finishes vary. Above photos are of model with similar floorplan.



RAINIER TEAM 253.398.8990 · PRESGROUPREALTY.COM